

BOLEY CENTERS, INC.

St. Petersburg, Florida

SEVENTEENTH

**Maxwell Awards
of
Excellence**

2007

Pinellas County Safe Haven

Developed to directly respond to a need identified by the local homeless coalition, Safe Haven is designed to serve chronically homeless adults by providing immediate housing for those who will accept it. All services are based on the individual's current ability and desire to accept psychiatric treatment and case management.



Just prior to Safe Haven's opening, much media attention was paid to the number of homeless and the tent city that existed in Pinellas County as well as the violence and aggression that the homeless were facing from the community; two homeless men were killed.

Boley Centers staff assisted city staff in moving mentally ill homeless adults out of the tent city and into housing. These people were frequent users of emergency rooms and crisis units, and had frequent encounters with the police.

Some of the interesting design features of this project include large single bedroom units for the tenants, multiple group living rooms, and ample, privacy screened, outdoor spaces for community gardens and socializing.

Safe Haven serves individuals who, because of their mental illness and frequent co-occurring substance use, refuse help or have been denied admission to or removed from other local programs.

Safe Haven is a "damp" program that accommodates tenants in various stages of recovery. Because the project serves people with co-occurring substance use histories and severe mental illness, one of the most significant treatment approaches is integrating mental health and substance use treatment. This method focuses on acute stabilization, motivational enhancement, active treatment, relapse prevention, and recovery.

Save Haven represents a unique collaboration among multiple jurisdictions. The City of St. Petersburg, Pinellas County, the Bessie Boley Foundation, the State of Florida, and HUD all collaborated to ensure adequate funding for the completion of Safe Haven.

BOLEY CENTERS, INC.

St. Petersburg, Florida

SPONSORING ORGANIZATION

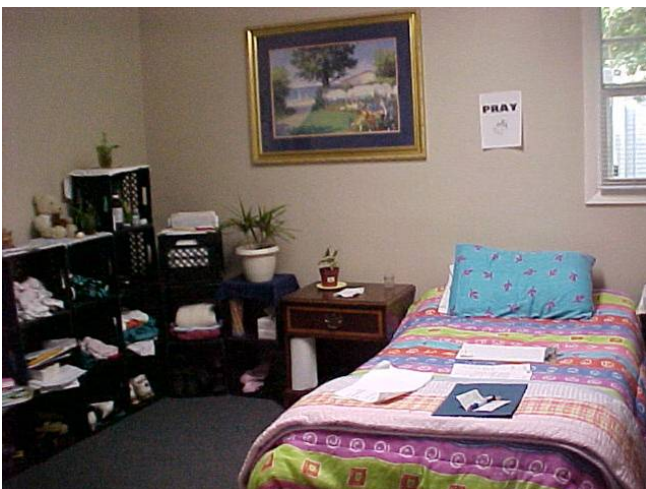
Boley Centers, Inc. was established in 1970 and now has more than 30 housing and service center locations throughout Pinellas County. Boley's mission is to enrich the lives of people in recovery by providing the highest quality treatment, rehabilitation, employment, and housing services. Boley's staff of 250 work throughout the county.

FUNDING FOR PINELLAS COUNTY SAFE HAVEN

- City of St. Petersburg
- Pinellas County
- State of Florida Homeless Housing Assistance Grant
- Federal Home Loan Bank of Atlanta
- Bessie Boley Foundation

CREATIVE APPROACHES TO SERVICE DELIVERY

- Utilizing a "integrated mental health and substance abuse treatment" method
- Offering unique life skills classes such as how to plan nutritionally sound meals and purchase food; these classes involve many levels of skill functioning including budgeting, social and transportation skills, and actual meal preparation
- Poetry and gardening groups



IN 1988, TO COMMEMORATE FANNIE MAE'S 50TH ANNIVERSARY, the Fannie Mae Foundation announced the Awards of Excellence Program, which seeks to encourage and recognize non-profit organizations working to develop and maintain housing for low-income Americans. The program also is intended to encourage more corporations and foundations to be involved as funding and investment partners. The Awards were renamed in honor of David O. Maxwell, who retired in 1991 after 10 years of service as chairman and chief executive officer of Fannie Mae and chairman, Fannie Mae Foundation.

FOR THE 17TH MAXWELL AWARDS PROGRAM, the Foundation, in collaboration with the Partnership to End Long Term Homelessness, is awarding up to \$75,000 to each selected nonprofit organization.

THE FANNIE MAE FOUNDATION creates affordable homeownership and housing opportunities through innovative partnerships and initiatives that build healthy, vibrant communities across the United States.

THE PARTNERSHIP TO END LONG TERM HOMELESSNESS was created to galvanize the philanthropic leadership and dollars needed to end long-term homelessness in America. Serving as an open knowledge network for funders, the Partnership shares strategic thinking, wide-ranging experience, and expertise to prevent and address

BOARD LEADERSHIP

Board Chairman: Cindy McCormick

Vice Chairman: Loretta Ross

Second Vice Chairman: Sally Poynter

STAFF LEADERSHIP

President: Gary MacMath

CONTACT INFORMATION

Boley Centers, Inc.
445 31st Street North
St. Petersburg, FL 33713
727.821.4819 (p)
727.822.6240 (f)
www.boleycenters.org